

Luxaflex®  
Print  
Collection

NEW  
Fabric  
Collection





## Introducing the Print Collection from Luxaflex® Window Fashions

We are delighted to introduce the Luxaflex Print Collection. It is a fabric offer that has taken form by an exclusive partnership with Signature Prints and collaboration with the Whitehouse Institute of Design.

Signature Prints evolved from a cottage industry niche business to a leading international textile company, specialising in the design, print and manufacturing of premium textiles. Signature Prints is headed up by David Lennie, who is known for internationalising the excellence of Florence Broadhurst's design library – hundreds of unique and luxurious patterns with rich and vibrant colours.

The Whitehouse Institute of Design is Australia's leading school in design, positioned at the forefront of rapid and ongoing change in the design industry, fostering creativity, innovation and entrepreneurship, where the collaboration is a perfect example of Luxaflex Window Fashions supporting tomorrow's design talent.

With advances in printing technology, the exclusive partnership with Signature Prints and the collaboration with the Whitehouse Institute of Design means that it is now possible to offer design options in printed fabrics, where each design is an artful take on window coverings.



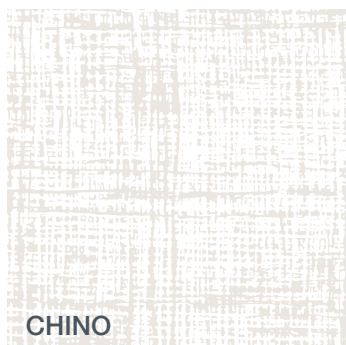


## Texee

Texee incorporates a surprising take on how colour is delivered. It encapsulates a hand-drawn linking design, where the surface irregularities add a large amount of visual interest. “The print has great visual harmony, which can only be achieved when a flow is created. Designs such as Texee are used to allow the eye to travel from one area of the design to another” says David Lennie.



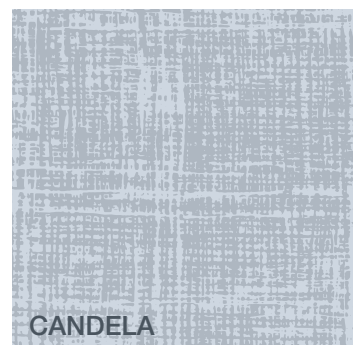
SMOKE



CHINO



LAGOON



CANDELA

# Luxaflex® Print Collection

## Micropia

The Micropia range is a collaboration with the Whitehouse Institute of Design, which provided students the opportunity to submit a design for the new Luxaflex Print Collection.

The Micropia range is all about print with the finer detail. It is the new form of DNA for pattern and design in printed fabrics. “The design is inspired by science and how looking up close at different organisms can change what you are looking at. For example, the division of cells can look like coral or leaves from a tree” says Rebecca Smith from the Whitehouse Institute of Design.

The Micropia colourways reflect the Australian culture, and draws on inspiration from the evolving changes in Australian interior design.











## Augustine

The new, modern craze of hand-painted water florals has come to the world of roller blind fabrics. With its daring and extravagant colour scheme, Augustine's appeal is just right for that quirky styling statement.



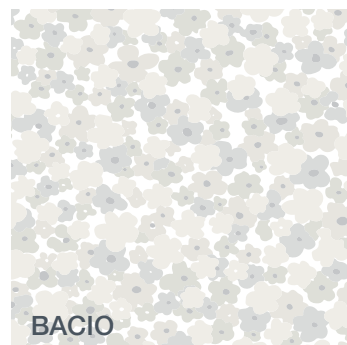




## Fleur Bouquet

Fleur Bouquet is where art deco meets modern. "A hand-drawn floral design, Fleur Bouquet is an example of nature being used to create a textured effect," says David.

The subtle interplay of colour and soft lines in this design does not detract from its visual, playful aspect.





Luxaflex® Print Collection







## Ferness

Ferness is inspired by a subtle modern take on the tropical foliage theme. The range embraces a relaxed and subtly glamorous Palm Springs vibe, offering a modern way to inject opulence into any room.

"It is a classical design from a time when much hand drawn art was influenced by nature. As in nature, Ferness looks as if it is floating over the background, where the non-specific angles soften the end visual effect. This design would have been commissioned for the furnishings industry" says David Lennie.

The range is perfect for those looking for some escapism.



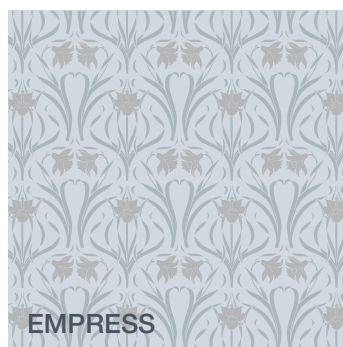
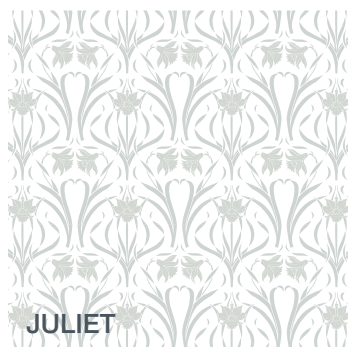


# Luxaflex® Print Collection



## Spring Bloom

Spring Bloom is inspired by the classic floral deco. The range is about embracing luxe details, and channels the decadent art deco movement by bringing the outdoor indoors and feeding the passion for the new opulence. "This design was inspired by the works of 'William Morris' – 1834-1896. William Morris was best known for his pattern designs which look to nature for their inspiration. He was a leading member of the Arts and Crafts Movement" says David.





## Features and Benefits

**Opacity** – All ranges come in 4 Blockout colours & 4 Translucent colours, in on-trend colourways.

**Made in Australia** – Proudly made in Australia to support the local textile industry.

**UV Resistant** – All colours meet Australian Standards for colour fastness to resist fading.

**5 Year Warranty\*** – Luxaflex Fabrics are backed by a 5 Year Warranty for your peace of mind.

---

## Technical Specifications

### Series

Classic

### Applications

Roller Blinds

### Composition

100% Polyester

### Fabric Weight

Translucent 240 gsm +/- 30gsm

Blockout 425 gsm +/- 30gsm

### Fabric Thickness

Translucent 0.30 +/- 0.10mm

Blockout 0.52 +/- 0.10mm

### Colour Fastness

6-7 UV

**Side by side pattern matching not available.**

---



## Care and Cleaning

### General Care

Dusting with a feather duster is all that is required to keep your fabric looking good.

### Stains

For the removal of dirt and grime, simply wipe fabric skins with a sponge soaked in lukewarm water. If marks are still visible, add a little detergent, then dry gently with a clean cloth.

---

## Made to Measure

Spring Bloom, Fleur Bouquet and Augustine are made to order. As a result, these items have a longer lead time of up to 21 working days.

---



