

## Welcome to the Luxaflex lifestyle

Thank you for purchasing Luxaflex® Veri Shades® or Vertical Blinds. With proper operation and care your new blinds will provide years of beauty and performance. Please review this instruction booklet thoroughly for operation and care information.

The information and advice included in this brochure has been prepared with care. However, we are unable to accept responsibility for the results of or any damage caused during operation.

As with all textiles, Luxaflex® fabrics are subject to some variations. Slight wrinkling, puckering or bowing is inherent in textile products and should be considered normal, acceptable quality. Precautions should be taken to reduce exposure to harsh environmental elements, such as salt air. Continuous exposure through open windows and doors will accelerate the fabric deterioration. Additionally, there will be slight differences in pattern alignment from the fabric on the rails to the fabric of the shade, which do not detract from the product's appeal. Variations in colour and/or pattern irregularities are unique characteristics that contribute to the classic beauty of a shade.

© Copyright 2018 Hunter Douglas Limited [ABN 98 009 675 709].  
® Registered Trade Marks of Hunter Douglas Limited.  
® Veri Shades is a registered Trade Mark of Kilmallock (ACT) Pty.Ltd.  
18.018.002 04/2018

[luxaflex.com.au](http://luxaflex.com.au)



## Luxaflex® Veri Shades® & Vertical Blinds



## Operation

### Chain and Cord operation

To open the blades, pull the chain until the blades are in the desired position. To pull the blades to one end, pull the cord until all blades are stacked together.



### Traversing Wand operation

To open or close the blind, turn the wand until the slats are tilted to the desired position. To traverse the blind, pull the wand until the slats are stacked to the desired position.



## Care and Cleaning

### Routine maintenance

#### Dusting

Surface dust can be easily removed using a clean soft brush or feather duster.

#### Spot cleaning

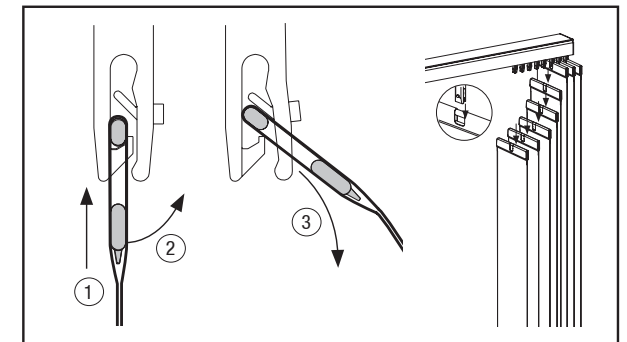
To remove dirt and grime, simply wipe the fabric blades with a sponge soaked in lukewarm water. If marks are still visible, add a little mild detergent and gently dry with a clean cloth.

There can be significant variations between fabrics used in Veri Shades® or Vertical Blinds, therefore we recommend that you spot clean a small area as a test first.

#### Hand wash (Veri Shades only)

Veri Shades fabric can be lightly hand washed and dried, and can also be ironed with a cool iron or steamed to remove creases.

To remove Veri Shades fabric, gently unhook the fabric blade by lifting up and out of the hook.



### CAUTION

Do not use harsh cloths, harsh abrasives, chlorine or ammonia based chemicals or cleaners on any Veri Shades surfaces as they may affect the surface appearance and durability.